



# RE-TOOL YOUR WOODWORKING SHOP

## FALL & WINTER 2021

PRICES IN EFFECT UNTIL DECEMBER 31<sup>ST</sup>, 2021

USE WHAT THE PROS USE



Proudly Canadian  
**\$40 SAVINGS**

### 6" BENCHTOP JOINTER WITH HELICAL CUTTERHEAD KC-6HJC

Helical cutterhead with 12 cutter inserts

**\$425.**

- Dual 2-1/2" and 4" dust chute for dust collector hook-up
- Comes 2 safety push blocks, cutter insert adjustment Torx key and adjustment hex. keys
- Cutterhead speed 12,000 RPM

### 8" BENCHTOP JOINTER WITH HELICAL CUTTERHEAD KC-8HJC

Helical cutterhead with 16 cutter inserts

**\$625.**

Powerful 1 HP motor

Table size with extensions 51-1/2" x 8-1/4"

### Replacement Helical cutter insert kit (10 pcs) KW-204

Fits: KC-6HJC, KC-8HJC & KC-13HPC

**\$99.99**

### 14" WOOD CUTTING BANDSAW WITH RIP FENCE AND RESAW GUIDE KC-1433FXR

7.5 Amp. motor

#### RIIP FENCE SYSTEM WITH RESAW GUIDE RF-1433R

With the purchase of # KC-1433FXR

**\$129.99**

#### RISER BLOCK KIT KW-049

Comes complete with a 105" blade

**\$129.99**

#### NEOPRENE WHEEL PROTECTOR FOR 14" WOOD BANDSAWS KW-094

**\$21.99**

**\*\$999.**

After \$40.00 mail-in rebate  
Sale price \$1039.00 Taxes payable on price before rebate



### 13" PLANER WITH HELICAL CUTTERHEAD KC-13HPC

- Powerful 15 Amp. motor with thermal overload protection
- Pre-set depth stops for repeat cuts at 1/8", 1/4", 1/2", 3/4", 1", 1-1/4", 1-1/2" and 1-3/4"

Helical cutterhead with 26 cutter inserts

### 12" x 18" VARIABLE SPEED WOOD LATHE KWL-1218VS

**\$699.99**

- Reliable single board computer microprocessor for precise control
- Comes complete with 3" faceplate, 6" & 12" tool rests with 5/8" post diameter, MT#2 spur centre and MT#2 heavy-duty live centre, safety goggles, knock-out rod, tool storage rack, screwdriver and 4 hex. keys

FORWARD & REVERSE FUNCTION

Variable speed from 450 - 3,800 RPM

1 HP high performance DC motor



### OPTIONAL BED EXTENSION EXT-1218VS

Bed extension increases the spindle turning capacity to 44"

**\$129.99**

### 93" WOOD CUTTING BANDSAW BLADES

Model	Length	Width	TPI	Thickness	Price
KBB-1418-14	93"	1/8"	14	.025"	\$21.99
KBB-1414-6	93"	1/4"	6	.025"	\$21.99
KBB-1436-10	93"	3/16"	10	.025"	\$21.99
KBB-1438-6	93"	3/8"	6	.025"	\$21.99
KBB-1412-6	93"	1/2"	6	.025"	\$21.99
KBB-1412-8	93"	1/2"	8	.025"	\$21.99
KBB-1434-4	93"	3/4"	4	.025"	\$21.99

### OPTIONAL EXCELSIOR OVERARM BLADE COVER SYSTEM WITH DUST COLLECTION XL-1014

Transparent blade cover with built-in dust collection to maximize the collection of saw dust

**\$499.99**

### KC-10KX/U30 30" RIP

**\*\$1899.**

After \$40.00 mail-in rebate  
Sale price \$1939.00 Taxes payable on price before rebate

### KC-10KX/U50 50" RIP

**\*\$1959.**

After \$40.00 mail-in rebate  
Sale price \$1999.00 Taxes payable on price before rebate



### 10" CABINET TABLE SAWS

- Riving knife system for maximum operator safety
- Comes with 10" x 40 tooth carbide tipped saw blade, cast-iron miter gauge, standard and dado inserts, push stick, storage hooks and hex. keys

### OPTIONAL EXCELSIOR Industrial Rip Fence systems

XL-U30 30" RIP **\$449.**  
XL-U50 50" RIP **\$499.**

### OPTIONAL Melamine Extension Table Kit EXT-5052

Comes with 2 support legs  
Fits: KC-10JCS, & KC-26FXT, KC-10KX **\$249.**

### 12" BENCH VARIABLE SPEED DRILL PRESS KC-12HS-VS

- Powerful 1/2 HP, 5 Amp.
- Variable speeds (580 - 3200 RPM)
- Comes with 5/8" drill chuck, chuck key, onboard chuck key storage and adjustment hex. keys



Digital Readout

NEW

**\$459.99**

### 1200 CFM DUST COLLECTORS

- Noise level reading at 36": 66-77dB
- Static pressure (inch of water): 9.5
- Dust port opening: 2 x 4" / 1 x 6"



KC-3105C

**\$525.**



KC-3105C/KDCF-3500

**\$759.**

### 15" PLANER KC-385FX

- 3 HP motor
- 8" max planing thickness
- Includes cabinet stand, planing knives, knife setting gauge and 4" dust collector outlet



**\*\$1999.**

After \$40.00 mail-in rebate  
Sale price \$2039.00 Taxes payable on price before rebate



## 10" JOBSITE SAW WITH FOLDING STAND

KC-5100NS

- Blade tilts 0° to 45°
- Comes with 10" x 40 tooth blade, rip fence, miter gauge, Standard and Dado table inserts, push stick and wrenches



15 Amp.  
motor  
4400 RPM

**\$439.99**

## 12" RADIAL ARM SAW

KC-12RAS

(220V, 1 PHASE)

- Powerful 2 HP, 220V single phase motor
- Precision indexing with positive stops at 22.5°, 45° and 90° for accurate bevel cuts
- Two 4" Dust chute for dust collector hook-up
- Includes 12" negative rake blade, blade arbor laser guide attachment, adjustment wrenches and hex. keys



**\$3999.**

## 10" SLIDING TILE SAW

KC-3310TS

- Powerful heavy duty 2.5 HP, 15 Amp. motor with GFCI protected power cord
- Full coverage wrap around splash guards
- 24" rip capacity at 90°
- Head tilts 0°-45° for bevel cuts
- Plunge head allows controlled cuts for electrical outlets, drains and AC registers

Powerful  
2.5 HP  
15 Amp motor

Enhanced  
Laser Effect



Folding stand with  
quick release latch  
system

**\$699.99**

## 8" DADO BLADE SET

KSC-8000

- Carbide-Tipped 24 tooth ATB-R Dado blades
- Cuts grooves from 1/8" to 13/16" wide
- 5/8" Arbor, 7000 RPM max.
- Comes with 14 pc. Dado Shim Set, wooden carrying case



**\$109.99**

30" INDUSTRIAL  
RIP FENCE SYSTEM  
KRF-i30



**\$475.**

50" INDUSTRIAL  
RIP FENCE SYSTEM  
KRF-i50



**\$525.**

INDUSTRIAL SLIDING  
TABLE ATTACHMENT  
KST-101



**\$1099.**

INDUSTRIAL ROUTER TABLE  
AND FENCE ATTACHMENT  
KRT-100



**\$899.**

TENONING JIG  
K-1500  
fits cabinet saws and  
contractor saws



**\$139.99**

## TABLE SAWS & ACCESSORIES

### 10" CABINET SAWS

Comes with riving knife, industrial "Tru-Rip" T-square rip fence system for precision cuts, laminated melamine extension table, 2 sturdy adjustable supporting legs for extension table (KC-26FXT/i50/5052 only), cast iron miter gauge with adjustable aluminum fence and flip stop, standard and dado insert

**TRU-RIP**  
Industrial Rip Fence systems



Powerful  
3 HP (220V)

**LEFT TILT** KC-26FXT/i30/30  
30" RIP

**\*\$2999.**

\* After \$40.00 mail-in rebate  
Sale price \$3039.00 Taxes payable on price before rebate

**LEFT TILT** KC-26FXT/i50/5052  
50" RIP

**\*\$3199.**

\* After \$40.00 mail-in rebate  
Sale price \$3239.00 Taxes payable on price before rebate

### 10" EXTREME CABINET SAW WITH RIVING KNIFE BLADE GUARD SYSTEM INCLUDING ROUTER TABLE AND SLIDING TABLE ATTACHMENTS

KC-26FXT/i30/DELUXE

- Model KC-26FXT shown here with router table attachment model KRT-100 and sliding table attachment model KST-101
- These router table and sliding table attachments fit most table saws having a 27" deep table



Powerful  
3 HP (220V)

**\*\$4499.**

\* After \$40.00 mail-in rebate  
Sale price \$4539.00 Taxes payable on price before rebate



# WOOD BANDSAWS & ACCESSORIES

## 12" WOOD BANDSAW

KC-1202FX

- Powerful 3/4 HP 120V motor
- Large 18-7/8" x 15-3/8" tilting table with rack & pinion adjustment
- Circle cutting guide for diameters up to 23-1/2"
- Dust chute accepts 2", 3" and 4" dust collector hoses
- Comes complete with cast aluminum miter gauge, rip fence with 5" high face, push stick, adjustment wrench and hex. keys



**\$799.**

88 3/16" WOOD CUTTING BANDSAW BLADES						
Model	Length	Width	TPI	Thickness	Price	
KBB-1218-14	88 3/16"	1/8"	14	.025"	\$21.99	
KBB-1236-10	88 3/16"	13/16"	10	.025"	\$21.99	
KBB-1214-6	88 3/16"	1/4"	6	.025"	\$21.99	
KBB-1238-6	88 3/16"	3/8"	6	.025"	\$21.99	
KBB-1212-6	88 3/16"	1/2"	6	.025"	\$21.99	

## 14" WOOD BANDSAW

KC-1402FX

- Powerful 1 HP 120V motor
- Large 21-3/8" x 15-5/8" cast iron tilting table with rack & pinion adjustment
- Circle cutting guide for diameters up to 27-1/2"
- Dust chute accepts 2", 3" dust collector hoses
- Comes complete with cast aluminum miter gauge, rip fence with 5" high face, push stick, adjustment wrench and hex. keys



Quick release lever blade tension system



Blade tension meter can be seen through conveniently placed window



**\$999.99**

100 5/8" WOOD CUTTING BANDSAW BLADES						
Model	Length	Width	TPI	Thickness	Price	
KBB-1318-14	100 5/8"	1/8"	14	.025"	\$24.99	
KBB-1336-10	100 5/8"	13/16"	10	.025"	\$24.99	
KBB-1314-6	100 5/8"	1/4"	6	.025"	\$24.99	
KBB-1338-6	100 5/8"	3/8"	6	.025"	\$24.99	
KBB-1312-6	100 5/8"	1/2"	6	.025"	\$24.99	
KBB-1334-4	100 5/8"	3/4"	4	.025"	\$24.99	

## 14" WOOD BANDSAW WITH 12" RESAW CAPACITY

KC-1502FXB

- 2 speeds (2300-3250) SFPM
- Cast-iron table tilts 45° to the right
- Motor, blade, miter gauge and precision "TRU-RIP" aluminum rip

20" x 16" cast iron table  
12.8 Amp. @ 110V - 6.2 Amp. @ 220V  
Pre-wired to 110V

## 220Volt CONVERSION KIT

KW-220-1502

For: KC-1502FXB



**\$79.99**



Hydraulic blade tension gauge

TRU-RIP RESAW FENCE SYSTEM

2-4" dust chutes

Safety foot brake

**\$2199.**

## 17" WOOD BANDSAW

KC-1702FXB

- 2 speeds (1600/3300) SFPM
- Rack and pinion height adjustment system
- Cast-iron table tilts 10° to the left & 45° to the right
- Miter gauge system

New improved upper & lower blade guide system



TRU-RIP RESAW FENCE SYSTEM

17" x 17" cast iron table  
14Amp. @ 110V - 7 Amp. @ 220V  
Pre-wired to 110V



2-4" dust chutes

**\$2199.**

131 5/8" WOOD CUTTING BANDSAW BLADES						
Model	Length	Width	TPI	Thickness	Price	
KBB-1714-6	131 5/8"	1/4"	6	.025"	\$27.99	
KBB-1738-6	131 5/8"	3/8"	6	.025"	\$27.99	
KBB-1712-4	131 5/8"	1/2"	4	.025"	\$27.99	
KBB-1734-3	131 5/8"	3/4"	3	.025"	\$29.99	
KBB-1710-2	131 5/8"	1"	2	.032"	\$29.99	

## 21" WOOD BANDSAW

KC-2102FXB

- 2 speeds (1890/3800) SFPM
- Cast-iron table tilts 10° to the left & 45° to the right
- Rack and pinion height adjustment system
- Miter gauge system

New improved upper & lower blade guide system



TRU-RIP RESAW FENCE SYSTEM

21" x 21" cast iron table  
16Amp. @ 110V - 8 Amp. @ 220V  
Pre-wired to 220V



2-4" dust chutes

**\$2699.**

152 1/8" WOOD CUTTING BANDSAW BLADES						
Model	Length	Width	TPI	Thickness	Price	
KBB-2114-6	152 1/8"	1/4"	6	.025"	\$29.99	
KBB-2138-6	152 1/8"	3/8"	6	.025"	\$29.99	
KBB-2112-4	152 1/8"	1/2"	4	.025"	\$29.99	
KBB-2134-3	152 1/8"	3/4"	3	.032"	\$37.99	
KBB-2110-2	152 1/8"	1"	2	.032"	\$37.99	

## 17" VARIABLE SPEED WOOD & METAL CUTTING BANDSAW

KC-1700WM-VS

- Variable speeds (wood): 540-3600 SFPM
- Variable speeds (metal): 100-650 SFPM
- Voltage (input power): 220V, 1 phase, 60 Hz
- Cast-iron table tilts 5° to the left & 45° to the right

23 1/2" x 17" cast iron table  
2 HP 7 Amp. @ 220V

Blade speed digital readout



TRU-RIP RESAW FENCE SYSTEM

2-4" dust chutes

Comes with: a 1/2" x 6 TP wood cutting blade, 1/2" x 10 TPI metal cutting blade, laser guide, work lamp, miter gauge and a precision "TRU-RIP" aluminum rip fence with resaw guide

**\$4299.**

## 13" PLANER / MOULDER

### KC-235PM

- Powerful 1.5 HP motor
- Double drive belt system
- Comes complete with stand, planing knives, setting gauge and 4" dust chute for dust collector hook-up
- 6 1/8" max. planing / moulding thickness



### 10 PC. MOULDING KNIFE SET

K-4509K  
ALSO AVAILABLE:  
20 INDIVIDUAL  
MOULDING  
KNIFE SETS

**\$279.**

### H.S.S. PLANER KNIVES

13"

KKC-13PM  
Fits: KC-235PM

**\$89.99**

15"

KKC-15

**\$99.99**

20"

KKC-20

**\$149.99**

**\$1799.**

## PLANERS



### 15" PLANER

#### KC-382CFX

- 3 HP motor (220V motor)
- 6" max planing thickness
- 2 speed autofeed
- Includes cabinet stand, planing knife, setting gauge and 4" dust collector outlet



**\$1899.**

### 20" HEAVY-DUTY PLANER

#### KC-520C

- Powerful 5 HP (220V motor)
- Cuts per inch: 104-83
- Feed rate: (16-20 FPM)
- 4 knife cutterhead
- 8" max. planing thickness
- Magnetic safety switch

**\$3199.**



BUILT-IN  
MOBILE  
BASE



### FOLDING ROLLER STAND KRS-102

- Stand height is adjustable from 27" to 44"
- 11-3/4" Roller width
- Folds flat for storage



**\$29.99**

### 3 in 1 FOLDING ROLLER STAND KRS-108

- Easily change from a roller, omni-directional or a flat support
- Stand height is adjustable from 27" to 44"
- 11-3/4" Roller width
- Folds flat for storage



**\$39.99**

### EXTENDABLE & FLEXIBLE CONVEYOR ROLLER TABLE KRRS-109

- Extends from 19" to 52"
- Raises from 24" to 45"
- 300 Lbs. max. capacity



**\$329.99**

## PLANERS WITH SPIRAL CUTTERHEADS

### 15" PLANER WITH SPIRAL CUTTERHEAD

#### KC-390FX

- Powerful 3 HP motor (220V motor)
- A spiral cutterhead is 50% quieter than a conventional cutterhead
- Anti-kickback fingers in front of the infeed roller to prevent wood kickback
- Magnetic safety switch
- Comes complete with cabinet stand and 4" dust collector outlet

4 Row spiral  
cutterhead with  
74 replaceable  
cutter inserts



**\$2999.**



BUILT-IN  
MOBILE  
BASE

### 20" PLANER WITH SPIRAL CUTTERHEAD

#### KC-526FX

- Powerful 5 HP motor (220V motor)
- A spiral cutterhead is 50% quieter than a conventional cutterhead
- Anti-kickback fingers in front of the infeed roller prevents wood kickback
- Magnetic safety switch
- Comes with knife setting gauge and 5" dust chute

4 Row spiral  
cutterhead with  
98 replaceable  
cutter inserts



**\$4799.**



BUILT-IN  
MOBILE  
BASE

## CARBIDE CUTTER INSERT KITS

#### KW-140

- Carbide inserts cut on all 4 sides
- Cutter size: 14mm x 14mm x 2mm
- Fits KC-526FX / KC-530FX-2 / KC-630FX-6

#### KW-104

- Carbide inserts cut on all 4 sides
- Cutter size: 15mm x 15mm x 2.5mm
- Fits: KC-525FX / KC-530FXR / KC-12HJPC



**\$109.**

E.A.

### 24" INDUSTRIAL PLANER WITH SPIRAL CUTTERHEAD

#### KC-630FX-2

25.1/12.6 Amp. @ 220V -440V

#### KC-630FX-6

9.6 Amp. @ 600V

- Powerful 10 HP motor
- 50% quieter
- Variable speed control sets the feed speed
- Spiral cutterhead is driven by 3 V-belts
- Magnetic safety switch

#### Comes complete:

With 6" dust collector outlet, 1/4" air screwdriver, air regulator with pressure gauge, set of 5 replacement cutter inserts, 10 replacement cutter insert screws, 5 T20 Torx bits, 5 T20 Torx screwdrivers, T-bar for Torx bits and hex. keys

6 Row spiral  
cutterhead with  
180 replaceable  
cutter inserts



**\$14999.**



# JOINTERS

## MAGNETIC & MICRO ADJUSTABLE KNIFE JIG ALIGNMENT KIT

KKC-50



**\$89.99**

## KNIFE JIG ALIGNMENT KIT

KKC-60



**\$49.99**

For Jointers

## EXTENDABLE UNIVERSAL MOBILE BASE

KMB-1250

500 lbs. Max.



**\$69.99**

## INDUSTRIAL MOBILE BASE

KMB-1290

900 lbs. Max.



**\$119.99**

## 6" JOINTER WITH SPIRAL CUTTERHEAD

KC-65FX

- Handwheel actuated infeed table for quick easy height adjustment
- Includes 2 safety push blocks
- A spiral cutterhead makes 50% less noise



Built-in 4" dust chute

4 Row spiral cutterhead with 26 replaceable cutter inserts

**\$1499.**

## 6" PARALLELOGRAM JOINTER

KC-70FX

- 6" x 55 1/2" table size

2 HP (110V)



Built-in 4" dust chute

**\$1199.**

## 6" PARALLELOGRAM JOINTER WITH SPIRAL CUTTERHEAD

KC-75FX

- Powerful 2 HP motor
- Easy setup (Carbide cutter inserts)



Built-in 4" dust chute

**\$1799.**

4 Row spiral cutterhead with 32 replaceable cutter inserts

## 8" INDUSTRIAL JOINTER

KC-203C

- 9" x 73" table size
- 35" x 5" fence size
- Adjustable fence stops at 45° & 90°



Powerful 2 HP motor

Built-in 4" dust chute

**\$1599.**

## 8" PARALLELOGRAM JOINTER

KC-80FX

- 8" x 76 1/2" table size
- 36" x 5" fence size
- Positive stops at 45° & 90°

2 HP (220V)



Built-in 4" dust chute

**\$1799.**

## 8" PARALLELOGRAM JOINTER WITH SPIRAL CUTTERHEAD

KC-85FX

- Easy set-up (Carbide cutter inserts)
- Parallelogram table adjustment system
- A spiral cutterhead makes 50% less noise



3 HP (220V) / (550V)

4 Row spiral cutterhead with 36 replaceable cutter inserts

**\$2299.**

### H.S.S. & CARBIDE JOINTERS KNIVES

Model	Blade Material	Size	Unit/Kits	Price
KKC-6	H.S.S.	6"	3	\$39.99
KKC-8	H.S.S.	8"	3	\$59.99
KKC-120	H.S.S.	12"	3	\$99.99
KKC-6-CB	Carbide	6"	3	\$219.99
KKC-8-CB	Carbide	8"	3	\$299.99

## 12" PARALLELOGRAM JOINTER

KC-120FX (220V, 1 phase, 60Hz)

KC-120FX-5 (550V, 3 phase, 60Hz)

- 84" x 13" table size
- 36" x 5" fence size
- Positive stops at 45° & 90°



Built-in 5" dust chute

**\$3999.**

## 12" PARALLELOGRAM JOINTER WITH SPIRAL CUTTERHEAD

KC-125FX (220V, 1 phase, 60Hz)

KC-125FX-5 (550V, 3 phase, 60Hz)

- Easy set-up (Carbide cutter inserts)
- Parallelogram table adjustment system
- A spiral cutterhead makes 50% less noise



Built-in 5" dust chute

**\$4399.**

4 Row spiral cutterhead with 52 replaceable cutter inserts

## 12" INDUSTRIAL JOINTER/PLANER WITH SPIRAL CUTTERHEAD

KC-12HJPC

- Powerful 3 HP motor
- A spiral cutterhead makes 50% less noise
- Magnetic safety switch
- Large 43" x 6" aluminum extruded fence pivots 0.45°
- Comes with 2 push blocks, set of 5 replacement cutter inserts, 2 T25 Torx screwdrivers and adjustment hex. keys



Shown here in planer mode

5 Row spiral cutterhead with 60 replaceable cutter inserts



4" dust chutes

**\$4499.**

3 HP (220V)

## OSCILLATING SPINDLE SANDER

KC-OVS-FX3

- 1" to 4" rubber drums can be fitted on both ends for full use of the entire spindle
- 4" Dust chute for dust collector hook-up
- Heavy-duty oil bath gearbox with oil level sight gauge
- 10 interchangeable spindles (1/4" x 5", 3/8" x 6", 1/2" x 6", 5/8" x 6", 3/4" x 9", 1" x 9", 1 1/2" x 9", 2" x 9", 3" x 9" and 4" x 9")
- Includes 3 interchangeable table inserts and adjustment keys

24 1/4" x 24 1/4"  
cast iron titling table



## OSCILLATING SPINDLE SANDERS & ACCESSORIES

### SLEEVE KIT 5" x 1/4" to 9" x 4"

Model	Sleeve Size	Grit	Units/Kits	Price
SL-525-80	5" x 1/4"	80	1	\$5.99
SL-525-120	5" x 1/4"	120	1	\$5.99
SL-638-80	6" x 3/8"	80	1	\$5.99
SL-638-120	6" x 3/8"	120	1	\$5.99
SL-612-80	6" x 1/2"	80	1	\$5.99
SL-612-120	6" x 1/2"	120	1	\$5.99
SL-658-80	6" x 5/8"	80	1	\$5.99
SL-658-120	6" x 5/8"	120	1	\$5.99
SL-934-80	6" x 3/4"	80	1	\$5.99
SL-934-120	6" x 3/4"	120	1	\$5.99
SL-910-80	9" x 1"	80	1	\$5.99
SL-910-120	9" x 1"	120	1	\$5.99
SL-915-80	9" x 1 1/2"	80	1	\$5.99
SL-915-120	9" x 1 1/2"	120	1	\$5.99
SL-920-80	9" x 2"	80	1	\$6.99
SL-920-120	9" x 2"	120	1	\$6.99
SL-930-80	9" x 3"	80	1	\$8.99
SL-930-120	9" x 3"	120	1	\$8.99
SL-940-80	9" x 4"	80	1	\$9.99
SL-940-120	9" x 4"	120	1	\$9.99

## OSCILLATING SPINDLE SANDER

KC-OVS-TL

- Rotating and oscillating effect ensures exceptional finishing results
- Table can be tilted downwards up to a maximum of 45° to allow the sanding of beveled parts
- Comes standard with 3 spindles (1/4", 1/2" and 5/8") and 2 drums (1-1/2" and 2")



### SLEEVE KITS 5 9/16" - 1/4" to 2"

Model	Sleeve Size	Grit	Units/Kits	Price
SL-514-K-80	5 9/16" x 1/4"	80	2	\$7.99
SL-514-K-120	5 9/16" x 1/4"	120	2	\$7.99
SL-512-K-80	5 9/16" x 1/2"	80	2	\$7.99
SL-512-K-120	5 9/16" x 1/2"	120	2	\$7.99
SL-534-K-80	5 9/16" x 3/4"	80	2	\$7.99
SL-534-K-120	5 9/16" x 3/4"	120	2	\$7.99
SL-515-K-80	5 9/16" x 1 1/2"	80	2	\$7.99
SL-515-K-120	5 9/16" x 1 1/2"	120	2	\$7.99
SL-520-K-80	5 9/16" x 2"	80	2	\$7.99
SL-520-K-120	5 9/16" x 2"	120	2	\$7.99

### OPTIONAL STAND SS-OVS-TL



**\$1999.**

**\$759.**

**\$119.**

## 6" X 48" BELT & 12" DISC SANDERS

KC-790FX

**\$1699.**

KC-790FX-DC  
WITH BUILT-IN DUST COLLECTOR

**\$1899.**

- Powerful 1.5 HP, 110V/220V motor
- 4" dust chute for dust collector hook-up (KC-790FX only)
- Comes with aluminum miter gauge, cast-iron work stop, T-slot centre point, enclosed stand and adjustment hex. keys



Dust Collector Bag  
KDCB-790



**\$39.99**

## BELT & DISC SANDERS & ACCESSORIES

### 6" x 48" BELT & 9" DISC SANDER

KC-760L

- Two 2-1/2" dust chutes with 2-1/2" to 4" adaptor for dust collector hook-up
- Comes complete with miter gauge, 2-1/2" to 4" dust chute adaptor and sturdy enclosed cabinet stand



1HP Motor

**\$549.99**

### 6" x 48" BELT & 12" DISC SANDER

KC-788FX

- 1.5 HP belt drive motor
- Sturdy cabinet stand
- 2-4" Dust chutes
- Quick belt release lever
- Heavy duty cast iron tables
- Miter gauge

**\$1299.**

### 9" STICK-ON ADHESIVE DISC KITS

Model	Disc size	Grit	Units/Kits	Price
SD-9-K-60	9"	60	3	\$7.99
SD-9-K-80	9"	80	3	\$7.99
SD-9-K-100	9"	100	3	\$7.99
SD-9-K-120	9"	120	3	\$7.99

### 6" x 48" SANDING BELT KITS

Model	Belt Size	Grit	Units/Kits	Price
SB-648-K-60	6" x 48"	60	2	\$12.99
SB-648-K-80	6" x 48"	80	2	\$12.99
SB-648-K-100	6" x 48"	100	2	\$12.99
SB-648-K-120	6" x 48"	120	2	\$12.99

### OPTIONAL DISC & BELT SAFETY GUARD KIT

KW-788

**\$79.99**



### OPTIONAL VERTICAL & HORIZONTAL BELT SAFETY GUARD KIT

KW-789

**\$79.99**



## MAGNETIC SWITCHES

KMAG-110-811	110V (8-11 Amp.)
KMAG-110-1114	110V (11-14 Amp.)
KMAG-110-1417	110V (14-17 Amp.)
KMAG-220-811	220V (8-11 Amp.)
KMAG-220-1114	220V (11-14 Amp.)
KMAG-220-1417	220V (14-17 Amp.)
KMAG-220-1721	220V (17-21 Amp.)

Comes with 2 wire clamps, 1 padlock and 2 spare keys



**\$109.99**  
each

## 12" DOVETAIL JIG

K-2796

- Handles materials from 5/16" to 1 1/4" thick, and widths up to 12"
- Unit includes 1/2" aluminum template

**\$109.99**



## ABRASIVE CLEANER

K-1306

1 1/2" x 1 1/2" x 8 1/2"

**\$17.99**





# OSCILLATING EDGE SANDERS & ACCESSORIES



**\$1599.**

## 6" x 89" OSCILLATING EDGE SANDER

KC-689-OSC-7

- Sturdy cabinet stand
- 4" Dust chute
- Quick belt release lever
- Comes with miter gauge, table guide and end table

End table allows curved sanding operations



### 6" x 89" SANDING BELTS

Model	Belt Size	Grit	Unit	Price
SB-689-60	6" x 89"	60	1	\$19.99
SB-689-80	6" x 89"	80	1	\$19.99
SB-689-100	6" x 89"	100	1	\$19.99
SB-689-120	6" x 89"	120	1	\$19.99



**\$2799.**

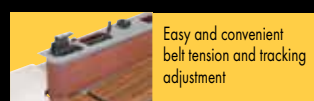
## 6" x 108" EDGE SANDER

CT-108C

- 2 HP motor
- Table size: Front 37" x 7 3/4", Side 19" x 12"
- Fully tilting front table
- 4" Dust chute
- Magnetic safety switch

### 6" x 108" SANDING BELTS

Model	Belt Size	Grit	Unit	Price
SB-6108-60	6" x 108"	60	1	\$19.99
SB-6108-80	6" x 108"	80	1	\$19.99
SB-6108-100	6" x 108"	100	1	\$19.99
SB-6108-120	6" x 108"	120	1	\$19.99



Easy and convenient belt tension and tracking adjustment



## 6" x 108" OSCILLATING EDGE SANDER

KC-108-OSC

- Powerful 2 HP motor
- Oscillating sanding belt
- Balanced 7" rubber drive wheel and 3" crown idler wheel provide uniform belt tracking
- 4" Dust chute
- End table allows curved sanding operations
- Magnetic safety switch

**\$3099.**

# DRUM SANDERS & ACCESSORIES

## 16" OPEN DRUM SANDER

KC-1632DS

- 10 Amp. motor
- Drum speed: 1,720 RPM
- 2 1/2" dust chute
- Easy clamping sanding belt loading system
- A metric and imperial depth scale is provided for thickness adjustment

With its open ended design this machine can sand a 32" wide piece in 2 passes



Infeed and outfeed tables can be folded down



Metric or imperial digital depth gauge for increased thickness accuracy

**\$1299.**

## 22" OPEN DRUM SANDER

KC-2244DS

- Powerful 1.75 HP motor
- 22" x 5" aluminum sanding drum
- Comes with metal stand with 4 caster wheels for portability

**\$1999.**



## 10" WET/DRY SHARPENER KIT

KC-4900S

Heavy-duty 1.6 Amp. motor quietly rotates at 115 RPM for maximum precision during sharpening

**\$219.99**

## OPTIONAL

### 4 pc. Accessory Kit

KM-130

(Short knife jig, long knife jig, scissors jig & axe jig)

**\$69.99**



## 26" X 12" DUAL DRUM SANDER

KC-26DS

- 3 HP (220V) motor
- 2 speeds (3-20 SFPM)
- Twin 4" dust chutes

Two 5" aluminum sanding drums are precision balanced and driven by 2 V-belts



### 5" x 120" SANDING BELT

Model	Belt Size	Grit	Unit	Price
SB-5120-80	5" x 120"	80	1	\$19.99
SB-5120-120	5" x 120"	120	1	\$19.99
SB-5120-150	5" x 120"	150	1	\$19.99
SB-5120-180	5" x 120"	180	1	\$19.99



26" x 12" Thickness Capacity

**\$3399.**

## 8" x 13" VARIABLE SPEED WOOD LATHE

KWL-813VS

- All precision-machined cast-iron bedway, headstock and tailstock construction
- 8" inboard swing for bowl turning
- Complete with 4-1/4" and 7" tool rests with 1/2" post diameter, 5-3/4"

**\$299.99**



High performance 1/3 HP (300 Watt) DC motor

Variable speed range of 750 to 3200 RPM

## 10" x 16" WOOD LATHE

KWL-1016C

- All precision-machined cast-iron bedway
- 6 speeds (480, 1270, 1960, 2730, 3327, 4023) RPM
- Complete with MT#2 live center, MT#2 spur center, 3" faceplate, steel knock-out bar, hex. keys and

**\$469.99**



### OPTIONAL BED EXTENSION

EXT-1016

Increases the spindle turning capacity to 38"



**\$129.99**

## 14" X 43" VARIABLE SPEED WOOD LATHE WITH DIGITAL READOUT

KWL-1443VS



Pivoting headstock turns 180° and locks into position for outboard turning



- Spindle tachometer with digital readout
- Variable speed from 600 - 2,400 RPM
- Pivoting headstock turns 180°
- Quick release headstock, tailstock and tool rest assembly for easy adjustments
- Comes complete with 6" face plate, 12" tool rest with offset and base, MT#2 headstock and tailstock centres and adjustment wrenches

**\$999.99**

### NOVA G3 WOOD LATHE CHUCK ANNIVERSARY BUNDLE

**nova G3** ANNIVERSARY BUNDLE

48260

- 3-3/8" 4 jaw chuck
- 1" x 8 TPI
- 20, 50 & 100mm and Mini Cole jaw sets
- No chuck insert required

Fits: KWL-1016C, KWL-1218VS, KWL-1443VS



**\$269.99**

### G3 REVERSIBLE CHUCK KIT (3-1/2")

**nova G3**

48232C

Direct Threaded 1" x 8 TPI RH/LH.

**KIT INCLUDES:**

- G3 Reversible Chuck, 50mm/2" Jaws, T-bar chuck key, Woodworm screw and fastenings



**\$169.99**

### G3 PEN TURNING CHUCK BUNDLE KIT (3-1/2")

**nova G3**

48265C

Direct Threaded 1" x 8 TPI RH/LH.

**KITS INCLUDES:**

- G3 Reversible Chuck, 50mm/2" Jaws, Pen Plus Jaws, Mandrel Saver, T-bar chuck key, Woodworm screw and fastenings



**\$219.99**

### 4 JAW /4" WOOD LATHE CHUCK

KW-100

Fits models :KWL-1016C, KWL-1218VS & KWL-1443VS  
1" x 8 FPP

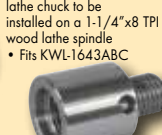


**\$139.99**

### 1-1/4" x 8 TPI WOOD LATHE CHUCK ADAPTOR

KW-200

- Allows a 1" x 8 TPI wood lathe chuck to be installed on a 1-1/4" x 8 TPI wood lathe spindle
- Fits KWL-1643ABC



**\$35.**

### 8 PC. WOOD LATHE CHISEL SET

KPRO-08

- Long 10" hard wood handles
- Comes in a wood box



**\$79.99**

## UNIVERSAL STAND & EXTENSION FOR WOOD LATHES

SS-EXT-101

- Leveling feet for stability on uneven floors
- Made of sturdy tubular steel
- Adjustable upper supports with 1" increments
- **Optional stand extension** (mod. SS-EXT-101) provides support for wood lathes fitted with bed extensions

SS-KWL-100 & SS-EXT-101 shown here with KWL-1218VS and EXT-1218VS installed.

**Extension only Fits:**  
KWL-1016C,  
KWL-1218VS



**\$89.99**

SS-KWL-100

- Leveling feet for stability on uneven floors
- Made of sturdy tubular steel
- Adjustable upper supports with 1" increments



**Stand only Fits:**  
KWL-1016C, KWL-1218VS

SS-KWL-100 shown here with KWL-1016C installed.

**\$179.99**



## HOLLOW CHISEL MORTISERS

### 5/8" HOLLOW CHISEL MORTISER WITH TILTING HEAD

MA-1050ST

- Powerful 3/4 HP
- Includes sleeve adaptors which accept 5/8" and 3/4" diameter chisel shanks
- Comes complete with mortising chisel and bit set (1/4", 5/16", 3/8" & 1/2"), 1/2" chuck and key, column mounted hold down, pair of 9 position table hold downs and quick release vise

**OPTIONAL STAND**  
SS-1050ST

**\$119.**

Head tilts from 0° to 30° to the right and left

**\$679.**

### 1" HOLLOW CHISEL MORTISER WITH TILTING HEAD

MA-1075ST

- Powerful 1 HP 110V/220V dual voltage motor
- 1/4" to 1" chisel and bit capacity
- Large longitudinal and transversal 19" x 12-1/2" sliding table prevents unnecessary repositioning and reclamping of the workpiece
- Accept 5/8" and 3/4" diameter chisel shanks
- Includes chisel adaptor bushings which accept 5/8" and 3/4" diameter chisel shanks
- Comes complete with mortising chisel and bit set (1/4", 3/8", 1/2" & 3/4"), chisel adaptor bushings, 1/2" chuck and key

**OPTIONAL STAND**  
SS-1075ST

Head tilts from 0° to 30° to the right and left for angle mortise cuts

**\$429.**

**\$2199.**

**\$2999.**

## INDUSTRIAL WOODWORKING SHAPER

KC-351S

- Spindle travels a full 3"
- Spindle speeds, 8,000 & 10,000 RPM
- Comes complete with 1/2" & 3/4" interchangeable spindles, 1/4" & 1/2" router bit adaptors and a miter gauge

**\$2199.**

Powerful 3 HP motor (220V)

### 3/4" UNIVERSAL SHAPER CUTTERHEAD WITH 13 INTERCHANGEABLE PROFILE CUTTERS

KW-091

**\$279.99**

## 13-SPINDLE LINE BORING MACHINE

KC-1300BM

- Powerful 1.5 HP 110V motor
- Designed for simultaneous multi-hole line boring or drilling, ideal for cabinet makers or shelving applications
- 13 spindles spaced 1-1/4" on centre, allowing drilling up to 13 evenly spaced holes
- Fully adjustable aluminum fence with work stops at each end to line up workpiece from the right or left to perform parallel boring patterns
- Indexing pins allow correct spindle alignment for resuming line boring operations in long workpieces

Large 31-1/2" x 15-3/4" melamine table top

## BLUM® HINGE BORING HEAD ATTACHMENT

KW-162

- Blum style 45mm-9.5mm three-hole pattern
- 3 spindle heads (rotation-2 left/1 right)
- Can be used with or without the 8mm boring bits
- Comes with 35mm hinge bring bit, 8mm boring bits (1 left/1 right), link-bar and adjustment wrench

**\$849.**

Adjustable height stop and depth stop

Adjustable fence work stops and extension work stops

## POWER FEEDERS

KPF-30V

- 3 feed rollers
- 3 1/8" roller diameter
- 1 3/16" roller width
- Variable feed rate of 7-40 feet per minute

1.2 Amp. Motor

VARIABLE SPEED

**\$699.99**

KPF-32

- 3 feed rollers
- 3 1/8" roller diameter
- 1 3/16" roller width

2.5 Amp. Motor

**\$1199.**

KPF-34

KPF-34-5

- 3 feed rollers
- 4 3/4" roller diameter
- 2 1/4" roller width

6.2 Amp. Motor (220V)  
2.7 Amp. Motor (550V)

**\$1599.**

## REMOTE POWER CONTROL SYSTEM

RC-110

- 120° INFRARED RAY RECEIVING ANGLE
- INCLUDES MOUNTING HARDWARE AND 2 AAA BATTERIES

(110V)

99 MINUTE TIMER



**\$119.99**

# DUST COLLECTORS & ACCESSORIES

## 700 CFM

KC-2405C

- Washable 1 micron upper felt dust bag for optimal air flow efficiency and reusable clear plastic lower dust bags (3)
- 4" diameter inlet port



**\$425.**

## 1200 CFM

KC-3109C

- 2 HP (220V) motor
- Improved metal impellers for maximum air flow performance
- Comes with wheel castors for portability



**\$699.**

**CLEAR FLEXIBLE COLLAPSIBLE PVC HOSE**  
4"-K-1033-50



Lin. Ft. **\$3.99**

**PVC HOSE**  
K-1034-50  
4" Lin. Ft.



K-1035-50  
5" Lin. Ft. **\$5.49**

**4" ALUMINUM BLAST GATE**  
K-1142



**\$22.99**

**4" BLAST GATE**  
K-1007



**\$11.99**

**4" T-FITTING**  
K-1013



**\$11.99**

**4" Y-FITTING**  
K-1015



**\$11.99**

**4" ELBOW**  
K-1017



**\$11.99**

**4" SPLICE**  
K-1019



**\$11.99**

**1"-6" UNIVERSAL ADAPTOR**  
K-1039



**\$11.99**

**WIRE HOSE CLAMPS**  
4"-K-1317  
**\$2.49**



5"-K-1318  
**\$2.99**

**DUST COLLECTION SEPARATOR with ELBOW**  
K-1056/  
K-1017



**\$59.99**

To maximize the cyclonic air flow in the drum

**4" DUST COLLECTION HOOK-UP SYSTEM 27 PC**



Ideal for connecting two machines to a dust collector

KW-270

**27 pc Kit includes:**

- 4 pc 4" x 36" Clear tubes
- 1 pc 4" x 7" Clear tube
- 2 pc 4" 45 degree elbows
- 2 pc 4" 90 degree elbows
- 7 pc 4" adaptor fittings
- 2 pc 4" Blast gates
- 1 pc 4" Y-fitting
- 8 pc retaining Brackets (including 16 screws and 16 wall plugs)

**\$174.99**

**1 MICRON FELT UPPER BAG**  
KDCB-3108T-1 MIC

Fits: KC-3108C

**\$55.**

**CLOTH BOTTOM DUST BAG**  
KDCB-3105B

Fits KC-3105C

**\$39.99**

**SEE THROUGH PLASTIC BOTTOM DUST BAG**  
KDCB-5

5 BAGS PER BOX

**\$24.99**



## 600 CFM

KC-1105C

- 1 HP motor
- Heavy duty bag
- Comes complete with 10' hose, dust hood, dust hood support and wheel castors for portability

**\$299.99**

**DUST COLLECTION HOSE KIT #1**  
K-1054

**KIT Includes:**

- 4" X 10 ft. Wood Dust Collection Hose
- 4" Universal Dust Hood
- 2 x 4" Wire Hose Clamps

**\$45.**

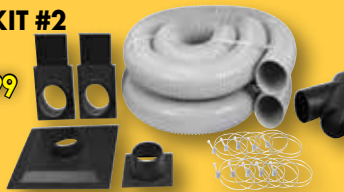


**DUST COLLECTION HOSE KIT #2**  
K-1055

**KIT Includes:**

- 2 x 4" blast gates
- 4" table saw dust hood
- 4" universal dust hood
- 4" Y-fitting
- 10 x 4" wire hose clamps
- 2 x 4" X 10 ft. wood dust collection hoses

**\$109.99**



## 2280 CFM

KC-4045C

- 3 HP (220V) motor
- Improved metal impellers are precision balanced and designed for maximum air flow performance
- 4" diameter dust ports accept accessory hoses

for attaching up to 3 machines  
• Comes with wheel castors for portability



**\$959.**

## 3980 CFM

KC-5043FX-2

**5 HP (220V)**

KC-5043FX-6

**5 HP (600V)**

- Improved metal impellers are precision balanced and designed for maximum air flow performance
- 4" diameter dust ports accept accessory hoses for attaching up to 4 machines
- Comes with wheel castors for portability



**\$2499.**

TOTAL HEIGHT 11 FT



## CYCLONE SEPARATOR

### KC-2940S

- Cyclonic force removes 99% of dust and wood chips before it reaches your dust collector.
- Recommended for 1.5 to 3 HP dust collectors
- Cyclonic action separates heavy debris from the fine particles and directs them into the steel drum
- 6" Inlet with 2 x 4" adaptor
- 7" Outlet with 6" adaptor, and additional 1" to 6" adaptor included
- Drum bag included

Turn your dust collector into a heavy-duty two-stage cyclone dust collection system



## CYCLONE DUST COLLECTORS & ACCESSORIES

### 1.5 HP CYCLONE DUST COLLECTOR

#### KC-8150C

- Noise level reading at 36": 78 dB
- Static pressure (inch of water): 9.7
- 29 Gallon steel drum with quick release handle and castor wheels for easy disposal
- Complete with 4 locking castor wheels for portability
- Dust port opening: 2 x 4" / 1 x 6"

**988/1320 CFM**



### 2 HP CYCLONE DUST COLLECTOR

#### KC-8200C

- Noise level reading at 36": 78 dB
- Static pressure (inch of water): 10.9
- 29 Gallon steel drum with quick release handle and castor wheels for easy disposal
- Complete with 4 locking castor wheels for portability
- Dust port opening: 2 x 4" / 1 x 7"

**1071/1650 CFM**



### 3 HP CYCLONE DUST COLLECTOR

#### KC-8300C

- Noise level reading at 36": 79 dB
- Static pressure (inch of water): 11
- 54 Gallon steel drum with quick release handle and castor wheels for easy disposal
- Complete with 4 locking castor wheels for portability
- Dust port opening: 3 x 4" / 1 x 8"

**1942/2900 CFM**



### OPTIONAL

6pc. heavy-duty bags kit

KDCB-82  
(Fits: KC-8150C  
KC-8200C)

**\$36.**

KDCB-83  
(Fits: KC-8300C)

**\$59.**

## 3 SPEED AIR CLEANERS

2 stage filtration, one disposable electrostatic 5 microns outer filter and 1 micron inner two pocket filter

### KAC-410

• .9 Amp. motor

Air capacity 410 CFM



COMES WITH 3-SPEED REMOTE CONTROL

**\$279.99**

### KAC-1200

• 4.2 Amp. motor

Air suction capacity 720, 1115, 1290 CFM



COMES WITH 3-SPEED REMOTE CONTROL

**\$449.99**

### KAC-1400

• 3 Amp. motor

Air suction capacity 950, 1085, 1400 CFM



COMES WITH 3-SPEED REMOTE CONTROL

**\$599.99**

## DUST COLLECTORS WITH 1 MICRON CANISTER FILTERS

### 700 CFM DUST COLLECTOR WITH CANISTER FILTER

#### KC-2405C/KDCF-2400

- Noise level reading at 36": 75-85 dB
- Static pressure (inch of water): 6.1
- Dust port opening: 4"

### 1 HP

7 Amp. @ 120V



### 1200 CFM DUST COLLECTOR WITH CANISTER FILTER

#### KC-3109C/KDCF-3500

- Noise level reading at 36": 66-77 dB
- Static pressure (inch of water): 9.5
- Dust port opening: 2 x 4" / 1 x 6"

### 2 HP

9 Amp. @ 220V



### 2280 CFM DUST COLLECTOR WITH CANISTER FILTER

#### KC-4045C/KDCF-3500

- Noise level reading at 36": 75-85 dB
- Static pressure (inch of water): 11.8
- Dust port opening: 3 x 4" / 1 x 8"

### 3 HP

10 Amp. @ 220V



**ADJUSTABLE  
AIR DEFLECTOR**

## COIL ROOFING NAILER KIT

**8245RN**

- 7/8" to 1 3/4" (11 Ga.)
- Comes with 1/4" air inlet, debris shield, safety glasses, oiler, hex. keys and sturdy carrying case

**HOT DEAL!**  
**\$169.99**

## 23 GA. X 1 3/8" HEADLESS PIN NAILER KIT

**8223PN**

- 1/2" to 1-3/8"
- Pin range
- Comes with 1/4" Air inlet, 2 removable non-marring tips, oiler, hex. keys and sturdy carrying case

**\$55.**

## 23 GA. X 2" HEADLESS PIN NAILER KIT

**8251PN**

- 1/2" to 2"
- Pin nail range
- Comes with 1/4" Air inlet, 2 removable non-marring tips, oiler, hex. keys and sturdy carrying case

**\$109.99**

## NAILERS & STAPLERS

### 18 GA. X 1" NARROW CROWN STAPLER KIT

**8101S**

- 3/8" to 1" Staple range
- Comes with 1/4" air inlet, oiler, hex. keys, & sturdy carrying case

**\$55.**

### 16 GA. X 2" MEDIUM CROWN STAPLER KIT

**8216S-2**

- 3/4" to 2" Staple range
- Comes with 1/4" air inlet, oiler, hex. keys, & sturdy carrying case

**\$99.99**

### 18 GA. NAILER/STAPLER KIT

**8210NS**

- 18 Ga. x 1/4" (3/8" to 1 5/8") stapler
- 18 Ga. (3/4" to 2") nailer
- Comes with 1/4" air inlet, oiler, hex. keys and sturdy carrying case

**HOT DEAL!**  
**\$69.99**

**ADJUSTABLE  
AIR DEFLECTOR**

**ADJUSTABLE  
AIR DEFLECTOR**

**ADJUSTABLE  
AIR DEFLECTOR**

**2 in 1**

## ARCTIC FLEX

### RETRACTABLE AIR HOSE REEL WITH HYBRID POLYMER AIR HOSE



**K-5038FRL**  
**50 ft. x 3/8"**  
• All-Weather Flexibility (-40°C to 65°C)  
• Comes with wall mounting

**\$109.99**

### MANUAL AIR HOSE REEL WITH HYBRID POLYMER AIR HOSE



**K-10014FRL**  
**100 ft. x 1/4"**  
• All-Weather Flexibility (-40°C to 65°C)  
• 360° swivel base

**\$109.99**

(-40°C to 65°C)

### HYBRID POLYMER INDUSTRIAL AIR HOSES



HYBRID POLYMER INDUSTRIAL AIR HOSES		
K-2514H	25' x 1/4"	<b>\$21.99</b>
K-2538H	25' x 3/8"	<b>\$29.99</b>
K-5014H	50' x 1/4"	<b>\$33.99</b>
K-5038H	50' x 3/8"	<b>\$44.99</b>
K-10014H	100' x 1/4"	<b>\$54.99</b>
K-10038H	100' x 3/8"	<b>\$65.99</b>

**300 PSI MAXIMUM PRESSURE**

### PREMIUM HYBRID POLYMER GARDEN HOSES

**150 PSI (Working)  
450 PSI (Burst)**



**K-5058GH**  
**5/8" x 50 ft.**

**\$45.**

**K-10058GH**  
**5/8" x 100 ft.**

**\$75.**

**Extreme All-Weather Flexibility Kink resistant**

## ULTRA-QUIET OIL-FREE AIR COMPRESSORS

### ULTRA-QUIET OIL-FREE AIR COMPRESSOR

**KC-1410A**

- 1.8 CFM @ 40 PSI, 1.2 CFM @ 90 PSI
- 125 PSI maximum tank pressure
- 1/4" universal "one touch" quick connect coupler

**1 GALLON**

**3/4 HP (PEAK) (60 Decibels)**  
ASME safety valve



**\$215.**

### ULTRA-QUIET OIL-FREE AIR COMPRESSOR

**KC-2020A**

- 3.8 CFM @ 40 PSI, 2.35 CFM @ 90 PSI
- 125 PSI maximum tank pressure
- Extra long pump life of over 3000 hours

**2 GALLON**

**2 HP (PEAK) (60 Decibels)**  
ASME safety valve



**\$269.99**

### ULTRA-QUIET OIL-FREE AIR COMPRESSOR

**KC-4620A**

- 3.80 CFM @ 40 PSI, 2.35 CFM @ 90 PSI
- Extra long pump life of over 3000 hours
- 120 PSI maximum tank pressure

**4.6 GALLON (2 X 2.3)**

**2 HP (PEAK) (60 Decibels)**  
ASME safety valve



**\$379.99**

### ULTRA-QUIET OIL-FREE AIR COMPRESSOR

**KC-10020SQ**

- 12.5 PSI maximum tank pressure
- 150 PSI max pressure
- 5.6 CFM @ 40 PSI, 4.4 CFM @ 90 PSI

**10 GALLON**

**3 HP (PEAK) (75 Decibels)**  
ASME safety valve



**\$499.99**

**KING  
INDUSTRIAL**

### 5.5 PEAK HP 20 GALLON AIR COMPRESSOR

**KC-2051H2**

- 150 PSI max pressure
- 7.6 CFM @ 40 PSI
- 6.0 CFM @ 90 PSI
- ASME safety valve

**20 GALLON**  
**5.5 HP (PEAK)**  
ASME safety valve



**\$749.**



## AIR TOOL KIT

8171

Comes with 1/2" Impact, Wrench, 3/8" Ratchet Wrench, Air Hammer and 1/4" Die Grinder

**\$149.99**

**71 PC.**



## 18 GA. X 2" BRAD NAILER KIT

8201NL

- 3/4" to 2" Nail range
- Comes with 1/4" air inlet, oiler, hex. keys, & sturdy carrying case

**NEW & IMPROVED**



ADJUSTABLE AIR DEFLECTOR



**HOT DEAL! \$55.**

## 2" FLOORING STAPLER/CLEAT NAILER KIT

8260FSN-2

- 1" to 2" Staple range
- 1 1/2" to 2" Cleat nail range
- Comes with mallet, 1/4" air inlet, safety glasses, oiler, hex. keys & sturdy carrying case

**2 in 1**



**HOT DEAL! \$189.99**

## TIRE INFLATION GUN WITH PRESSURE GAUGE

K-1630

**\$23.99**



## 16 GA. X 2-1/2" BRAD NAILER KIT

8225NL

- 3/4" to 2 1/2" Nail range
- Comes with 1/4" air inlet, oiler, hex. keys, & sturdy carrying case

**HOT DEAL! \$99.99**



ADJUSTABLE AIR DEFLECTOR

## CLIPPED HEAD FRAMING NAILER KITS

8228N

- Shoots standard 2 3/16" - 3 9/16", 28° - 30° nails

8234N

- Shoots standard 2 3/16" - 3 9/16", 34° nails



ADJUSTABLE AIR DEFLECTOR

**\$149.99 ea**

### 5.5 PEAK HP

#### 24 GALLON AIR COMPRESSOR

KC-3124V2

- 150 PSI max pressure
- 7.6 CFM @ 40 PSI
- 6.0 CFM @ 90 PSI
- ASME safety valve

2 cylinder cast iron single stage oil lubricated pump

### STATIONARY 6.5 PEAK HP

#### 60 GALLON AIR COMPRESSOR

KC-6160V3

- 150 PSI max pressure
- 13.4 CFM @ 40 PSI
- 11.2 CFM @ 90 PSI
- High efficiency reed valves

2 cylinder cast iron single stage oil lubricated pump

### HIGH OUTPUT 6.5 PEAK HP

#### 60 GALLON AIR COMPRESSOR

KC-5160V3

- 150 PSI max pressure
- 22.6 CFM @ 40 PSI
- 18.5 CFM @ 100 PSI
- High efficiency reed valves

3 cylinder cast iron single stage oil lubricated pump

### HIGH OUTPUT 7.5 PEAK HP

#### 80 GALLON AIR COMPRESSOR

KC-7180V3-MS

- 200 PSI max pressure
- 43 CFM @ 40 PSI
- 28 CFM @ 175 PSI

**High Performance Air Compressor with high output of 28 CFM @ 175 PSI**

**NEW & IMPROVED**

2 cylinder cast iron single stage oil lubricated pump

## AIR COMPRESSORS



**\$849.**



**\$1099.**



**\$1599.**



**\$3699.**

COMPRESSOR OIL BOTTLE  
KW-077  
(850ml)

**\$9.99**



# PROFESSIONAL SCROLL SAWS



**16"**  
KXL-16

- Professional quality scroll saw with 1.3 Amp DC motor
- Variable speed (400-1400 strokes/min)
- Tool free blade change system with blade holders which accept standard 5" pinless blades
- Entire head tilts up to 30° to the left and up to 45° to the right for angled cuts
- Large 12" x 18-1/2" stationary table with built-in 2-1/2" dust chute for dust collector hook-up
- Comes with five 5" pinless blades, replacement blade tension lever kit and adjustment hex. key

**\$799.**



Built-in dust blower system

## OPTIONAL

**Pedal Switch**  
XL-100



**\$49.99**

**21"**  
KXL-21/100

- Professional quality scroll saw with 1.3 Amp DC motor
- Variable speed (400-1550 strokes/min)
- Tool free blade change system with blade holders which accept standard 5" pinless blades
- Entire head tilts up to 38° to the left and up to 45° to the right for angled cuts
- Large 13-1/2" x 23-1/2" stationary table with built-in 2-1/2" dust chute for dust collector hook-up
- Comes with five 5" pinless blades, foot switch, replacement blade tension lever kit and adjustment hex. key

**\$1099.** Comes standard with foot switch



Built-in dust blower system

## OPTIONAL

**STAND**  
KSS-16XL  
For Models:  
KXL-16 &  
KXL-21/100



**\$119.**

**30"**  
KXL-30/100

- Professional quality scroll saw with 1.3 Amp DC motor
- Variable speed (400-1550 strokes/min)
- Tool free blade change system with blade holders which accept standard 5" pinless blades
- Entire head tilts up to 38° to the left and up to 45° to the right for angled cuts
- Large 14" x 32-1/2" stationary table with built-in 2-1/2" dust chute for dust collector hook-up
- Comes with five 5" pinless blades, foot switch, replacement blade tension lever kit and adjustment hex. key

Comes standard with foot switch

**\$1299.**



Built-in dust blower system

## OPTIONAL

**STAND**  
KSS-30XL  
For Model:  
KXL-30/100



**\$119.**

# Router Table Kits

**ROUTER TABLE KIT**  
XL-200MEP

**Kit includes:**

- XL-080- Router Table Fence
- XL-049- MDF Table
- XL-114- Phenolic Router Insert Plate
- XL-085- Floor Stand with Switch



**\$799.**



**DELUXE ROUTER TABLE KIT**  
XL-200C

**Kit includes:**

- XL-125- Router Lift
- XL-080- Router Table Fence
- XL-075- Cast-iron Table
- XL-130- Universal Dust Collection Kit
- XL-085- Floor Stand with Switch



**\$1799.**



## ROUTER REDUCER COLLARS

XL-314  
3-1/4"



**\$39.99**

XL-312  
3-1/2"



**\$39.99**

## 4 PC. INSERT RING KITS

XL-074  
Zero Clearance



**\$89.99**

XL-076  
(1/4", 1/2", 1-3/8", 2-1/2")



**\$89.99**

## PHENOLIC ROUTER INSERT PLATE

XL-114  
11-3/4" x 9-1/4"



**\$89.99**

## ROUTER LIFT WITH HEIGHT LOCK

XL-125

Heavy-duty construction with 11-3/4" x 9-1/4" anodized aluminum top plate



**\$499.99**



## ALL WEATHER HEAVY-DUTY SINGLE-TAP EXTENSION CORDS

Model	Length	AWG	Color	\$
K-2512-1T-YE	25'	12/3	YELLOW	36.99
K-2512-1T-RD	25'	12/3	RED	36.99
K-2512-1T-OR	25'	12/3	ORANGE	36.99
<ul style="list-style-type: none"> <li>15A 125V, 1675W For indoor and outdoor use</li> <li>Ultra flexible / High visibility colors / Lighted ends</li> </ul>				
K-5012-1T-YE	50'	12/3	YELLOW	69.99
K-5012-1T-RD	50'	12/3	RED	69.99
K-5012-1T-OR	50'	12/3	ORANGE	69.99
K-5012-1T-GN	50'	12/3	GREEN	69.99

## 30 PC VARIABLE SPEED OSCILLATING MULTI-TOOL KIT & ACCESSORIES

8349QR

Each kit includes a sanding back-up pad with hook and loop backing, 24 sanding papers (60, 80 and 120 grit) with hook and loop backing, 35mm Tru-cut narrow offset saw blade, 52mm rigid offset scraper blade, hex. key, and sturdy carrying case



**\$65.**

Tru-Cut carbide pro plunge saw blade KW-4823 <b>\$14.99</b>	Electrical Box Cutter KW-4825 <b>\$19.99</b>	KW-4801 <b>\$14.99</b>	KW-4802 <b>\$17.99</b>	KW-4803 <b>\$17.99</b>
KW-4804 <b>\$17.99</b>	KW-4805 <b>\$17.99</b>	KW-4806 <b>\$17.99</b>	KW-4810 <b>\$7.99</b>	KW-4811 <b>\$7.99</b>
KW-4812 <b>\$7.99</b>	KW-4813 <b>\$7.99</b>	KW-4815 <b>\$7.99</b>	KW-4816 <b>\$7.99</b>	KW-4817 <b>\$7.99</b>
KW-4818 <b>\$12.99</b>	KW-4819 <b>\$7.99</b>	KW-4820 <b>\$12.99</b>	KW-4821 <b>\$12.99</b>	

## VARIABLE SPEED DRYWALL SANDER

KC-8379

- LED light illuminates the work
- Telescopic extension: 45" to 65"
- Comes with 6 hoop & loop sanding papers (2 x 80, 120, 180 Grit), extension tube, dust hose, 2 vacuum adaptors (1-1/4" & 1-3/8") and adjustment hex. key

**\$329.99**

## 8 GALLON TOOL TRIGGERED WET-DRY VACUUM WITH HEPA FILTER

KC-8590TTV

- 10 Amp. motor

**\$439.99**

## WET-DRY VACUUMS

8530LPN

- Double filtration system
- Tank water drain
- Power cord wrap for 12 ft. power cord
- Comes complete with 6 ft. x 1-1/4" hose, 2 pc. plastic extension wand, 30L dust bag, cartridge filter, foam filter, reusable filter, 10" floor sweep and crevice tool

**\$109.99**

**4 PEAK HP 8 30 LITERS GALLON US**

8540LST

- Double filtration system
- Tank water drain
- Power cord wrap for 12 ft. power cord
- Comes complete with 6 ft. x 1-1/4" hose, 2 pc. extension wand, 40L dust bag, cartridge filter, foam filter, reusable filter, 10" floor sweep and crevice tool

**\$179.99**

**5 PEAK HP 10 40 LITERS GALLON US**

8560LST

- Double filtration system
- Tank water drain
- 18 ft. power cord with convenient power cord wrap posts
- Comes complete with 8 ft. x 2-1/2" flex hose, 2 pc. 2-1/2" extension wand, contoured handle with air control, cartridge filter, foam filter, 14" floor sweep with squeegee insert, gulper tool, crevice tool and hanging accessory storage bag

**\$299.99**

**6.5 PEAK HP 16 60 LITERS GALLON US**

## PORTABLE VARIABLE SPEED METAL CUTTING BANDSAW

KC-8377

- Variable speed dial for 0-420 SFPM
- Cutting capacity of 5" x 5"
- Blade tension lever for quick adjustments
- Comes with standard 44-7/8" x 1/2" x 0.025" 14 TPI metal cutting blade

**\$219.99**

**Optional**  
Miter Stand turns this Bandsaw into a Cut-off Saw  
SS-8377

**\$99.99**

## BI-METAL BLADES

Model	Length	Width	TPI	Thickness	Price
KBB-8376-BM-1014	44 7/8"	1/2"	10-14	.020"	\$21.99
KBB-8376-BM-1418	44 7/8"	1"	14-18	.020"	\$21.99

## 1/2" DRILLING & MIXING KIT

KC-8316

- 0 - 600 RPM - 9 Amp. motor
- Variable speed trigger with lock-on button
- Double gear reduction for added torque
- Rear D-handle rotates 360°
- Comes with 1/2" chuck, 3 galvanized mixing paddles (10mm hex. shank), wrench and sturdy carrying case

**\$149.99**

## DRYWALL & PANEL LIFT

KDL-11

- Hangs drywall in sizes up to 4 ft. x 16 ft. on any ceiling or wall up to 11 ft. high
- Tripod foot brake keeps drywall lift in position during use
- Easy to assemble and disassemble, can be placed in car trunk

**\$219.99**

## HEPA CARTRIDGE FILTERS

KVAC-1145  
Fits: 8520LP, 8530LP, 8531LP-B, 8540LST

**\$39.**

KVAC-1150  
Fits: 8560LST

**\$39.**

## TOE KICK SAW

KC-8359

- Powerful 1 HP, 6.8 Amp. motor
- Designed to cut subfloors underneath cabinets
- Flush mounted carbide blade cuts up to the inner wall of toe-kick panels
- 4 depth of cut positions: 1/4", 3/8", 5/8" and 3/4"
- Comes with 3-3/8" x 18 tooth carbide blade and adjustment hex. key

**NEW**

**\$149.99**

## Replacement carbide blade

KW-170

3-3/8" x 18 tooth carbide blade

**\$29.99**

## BISCUIT JOINER KIT

KC-8306

- Motor: 7 Amp. 10,800 RPM
- Robust fence with 0 to 90° and 90° to 135° tilt adjustments with positive stops at 45° & 90°
- 45° location notch allows indexing off the outside of a mitered joint
- Kit includes biscuit joiner with 4" carbide tipped blade, dust bag, hex. key and plastic carrying case

**\$149.99**

## 50 FT. 5 LED STRING LIGHT

5,000 Lumens

K-5016-5LED

- Temporary string lighting with 5 high intensity LED lights in 10 feet increments
- 50 foot 16 AWG /3 conductor grounded SJT power cord
- 75 linear feet of coverage at 10 feet in height Waterproof to IP44 standards

**\$109.99**

## LED DUAL-HEAD WORK LIGHTS

**Cordless**

KC-1502LED-C

10W Work light emits 1500 lumens  
**\$59.99**

**NEW**

KC-1501LED

15W Work light emits 1500 lumens  
**\$35.99**

**NEW**

KC-3001LED

20W Work light emits 3000 lumens  
**\$59.99**

**NEW**

KC-4001LED

36W Work light emits 4000 lumens  
**\$99.99**

**NEW**

**\$219.99**

**\$149.99**

**\$99.99**

KC-4002LED-ST

KC-3002LED-ST

15



# DRILL PRESSES & ACCESSORIES



**17" DRILL PRESS**  
KC-118FC

- 12.5 Amp. motor
- 16 speeds (240-3400 RPM)
- 17" swing
- 3 1/4" stroke
- 5/8" chuck

**\$799.**

**17" DRILL PRESS with SAFETY GUARD & LIMIT SWITCH**  
KC-118FC-LS

- 12.5 Amp. motor
- 16 speeds (240-3400 RPM)
- 17" swing
- 3 1/4" stroke
- 5/8" chuck

**\$899.**



**LONG STROKE**

**17" LONG STROKE DRILL PRESS with SAFETY GUARD**  
KC-119FC-LS

- Motor: 12.5 Amp. @ 110V, 6.25 amp. @ 220V
- 12 speeds (255-2750 RPM)
- 16 15/16" swing
- 6" stroke
- 3/4" chuck

**\$1199.**



**22" DRILL PRESS**  
KC-122FC

- 12.5 Amp. motor
- 1 1/4" capacity
- Spindle taper MT #4
- 12 speeds (180-4200 RPM)
- 4 3/4" stroke
- 3/4" chuck

**\$1259.**



**22" DRILL PRESS with SAFETY GUARD & LIMIT SWITCH**  
KC-122FC-LS

- 12.5 Amp. motor
- 1 1/4" capacity
- Spindle taper MT #4
- 12 speeds (180-4200 RPM)
- 4 3/4" stroke
- 3/4" chuck

**\$1359.**



**15" VARIABLE SPEED INDUSTRIAL DRILL PRESS**  
KC-30HS-VS

- Motor: 14 Amp. @ 115V, 7 Amp. @ 230V
- 5/8" capacity
- Spindle taper JT#3
- Variable speeds (400 - 5,000 RPM)
- 6" stroke
- 5/8" chuck

**\$2699.**

Variable speed handwheel with digital readout

Safety guard with limit switch protection



**Wood Mortising ATTACHMENT**  
MA-511

Kit comes with chisel holder, holddown arms, holddown bracket, fence, ring bushing adaptors, 4 pc. 1/2" shank mortising chisels & bits and carrying case

**\$109.99**



**Drill Press VISES**

KPV-3 3" **\$19.99** KPV-4 4" **\$25.99**  
KPV-5 5" **\$35.99** KPV-6 6" **\$45.99**



**Cross slide VISES**  
Makes lateral or longitudinal adjustments simple

KCV-4N 4" **\$65.** KCV-5N 5" **\$85.** KCV-6N 6" **\$109.99**



**The Most Innovative Drill Presses EVER!**

**16" NOVA VIKING DVR DRILL PRESS**  
83705

- Powerful direct drive 1.75 HP high torque motor with no pulleys or belts to cause vibration
- Spindle taper MT #2
- Comes with 5/8" drill chuck & key, firmware USB cable, knock-out wedge, adjustment wrench and hex. key

**\$1499.**

**18" NOVA VOYAGER DVR DRILL PRESS**  
58006

- Powerful direct drive 1.75 HP high torque motor with no pulleys or belts to cause vibration
- Spindle taper MT #2
- Comes with 5/8" drill chuck & key, firmware USB cable, knock-out wedge, adjustment wrench and hex. keys

**\$2199.**

DVR with Adaptive Control™ Software  
BY: KING INDUSTRIAL